

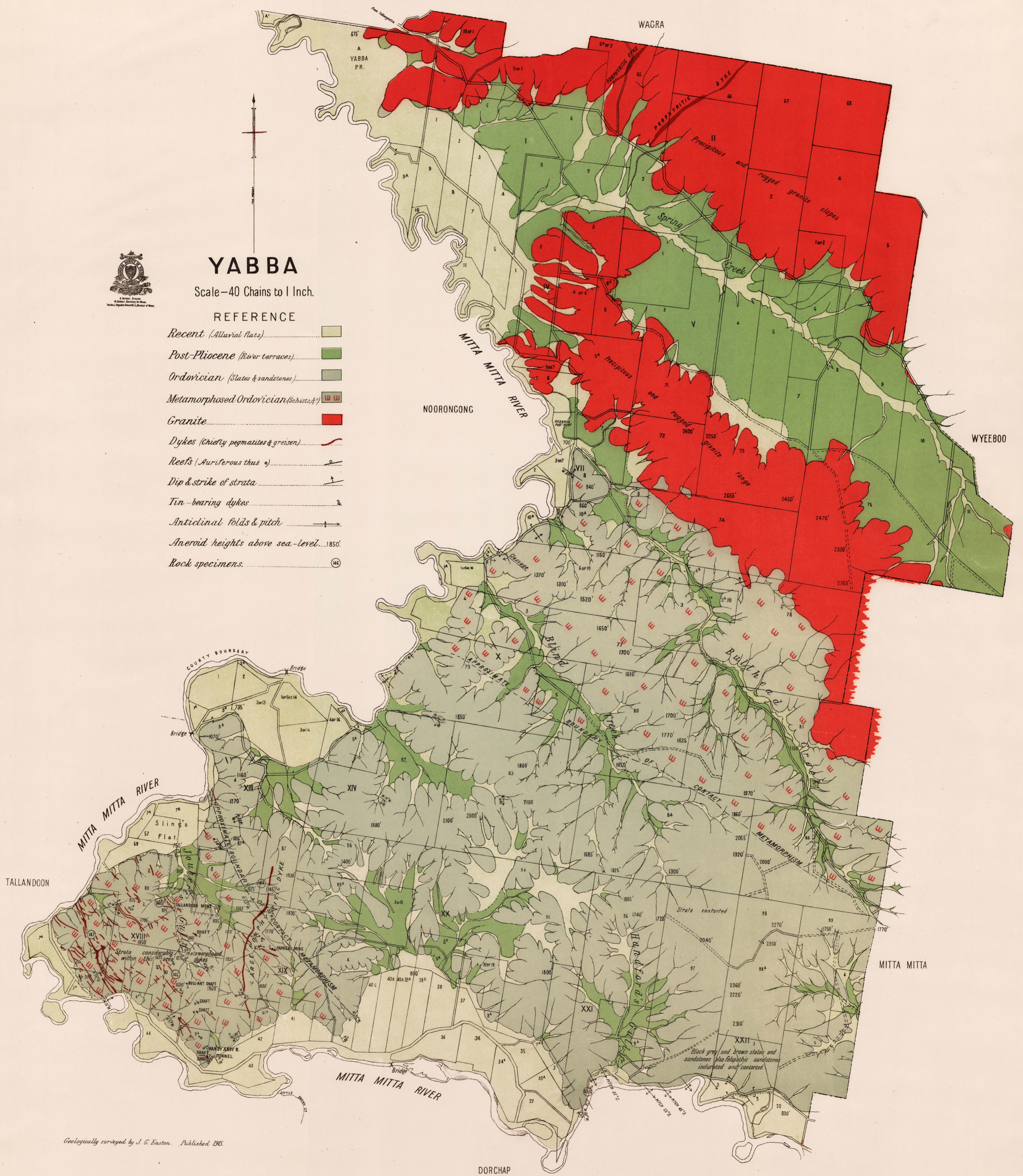


YABBA

Scale—40 Chains to 1 Inch.

REFERENCE

- Recent (Alluvial flats)*
- Post-Pliocene (River terraces)*
- Ordovician (Slates & sandstones)*
- Metamorphosed Ordovician (Schists, &c.)*
- Granite*
- Dykes (Chiefly pegmatites & greisen)*
- Reefs (Auriferous thus σ)*
- Dip & strike of strata*
- Tin-bearing dykes*
- Anticlinal folds & pitch*
- Aneroid heights above sea-level...1850'*
- Rock specimens.*



Geologically surveyed by J. G. Easton. Published 1905.

Litho. R. M. Cann.