

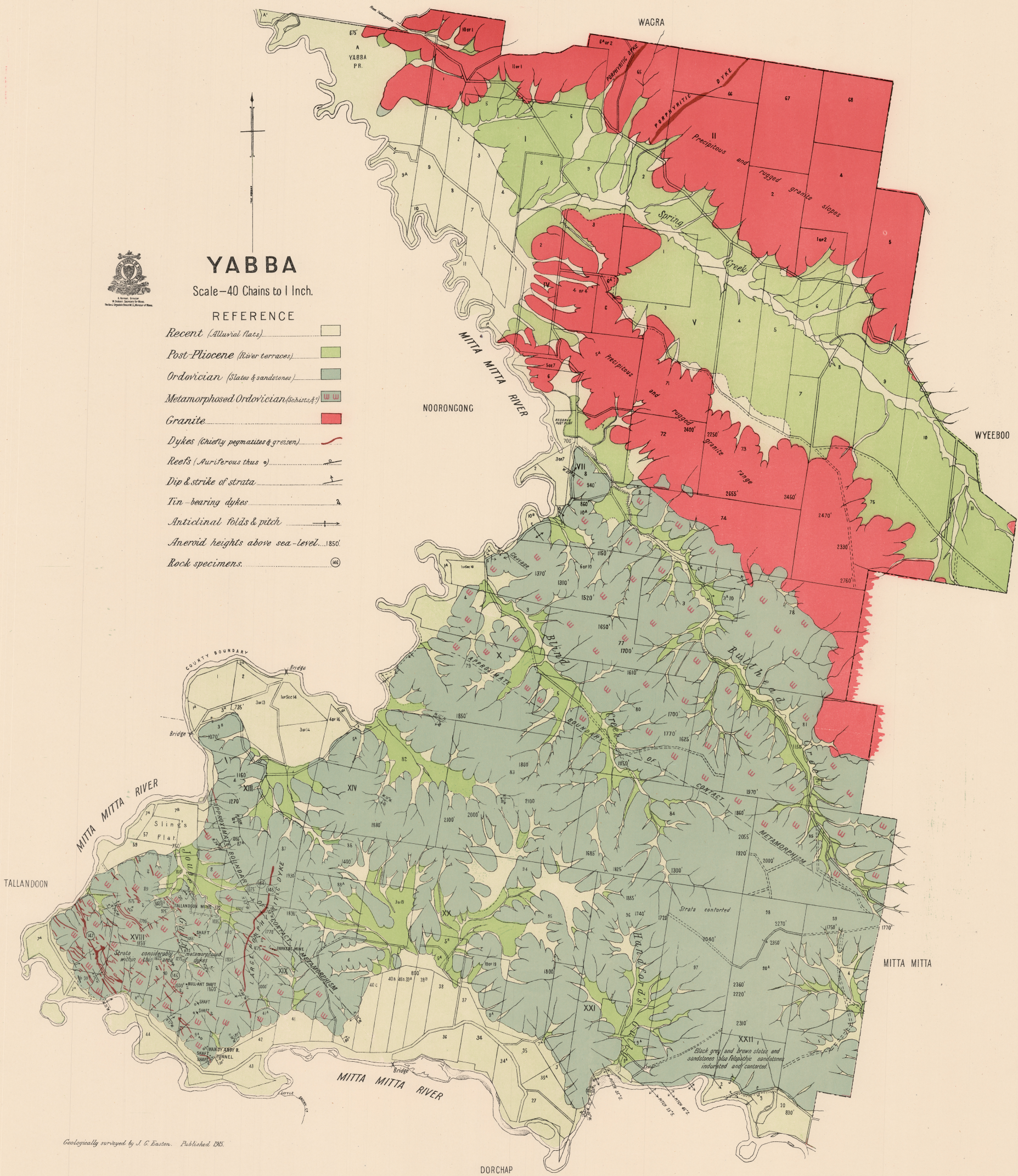


YABBA

Scale—40 Chains to 1 Inch.

REFERENCE

- Recent (Alluvial flats)
- Post-Pliocene (River terraces)
- Ordovician (Slates & sandstones)
- Metamorphosed Ordovician (Schists & g.)
- Granite
- Dykes (Chiefly pegmatites & greisen)
- Reefs (Auriferous thus)
- Dip & strike of strata
- Tin-bearing dykes
- Anticlinal folds & pitch
- Aneroid heights above sea-level...1850'
- Rock specimens.



Geologically surveyed by J. G. Easton. Published 1905.

Litho. R. M. C. Carr.