

# YINNAR COUNTY OF BULN BULN

Scale—40 Chains to one inch.

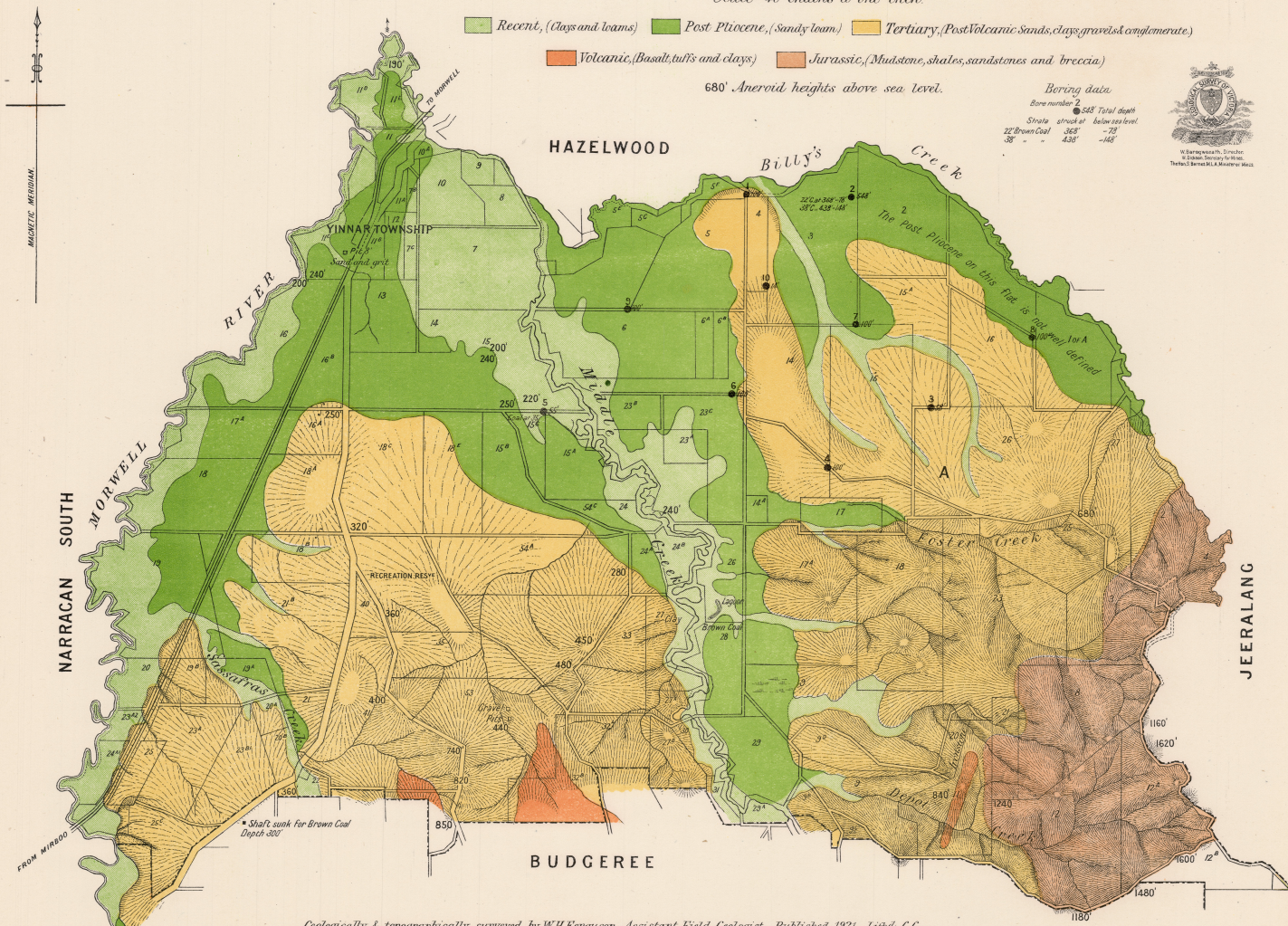
- Recent, (Clays and loams)
- Post Pliocene, (Sandy loam)
- Tertiary, (Post Volcanic Sands, clays, gravels & conglomerate)
- Volcanic, (Basalt, tuffs and clays)
- Jurassic, (Mudstone, shales, sandstones and breccia)

680' Aneroid heights above sea level.

Boring data  
 Bore number 2    ● 548' Total depth  
 Strata struck at below sea level.  
 22' Brown Coal    368'    - 75'  
 38'                438'    - 148'



W. H. Ferguson, District Geologist, Melbourne, Victoria, Australia.



Geologically & topographically surveyed by W.H. Ferguson, Assistant Field Geologist. Published 1921. Litho C.G.