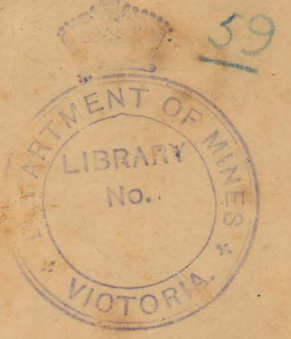


*Illustrating a Lithographic Branch Report*

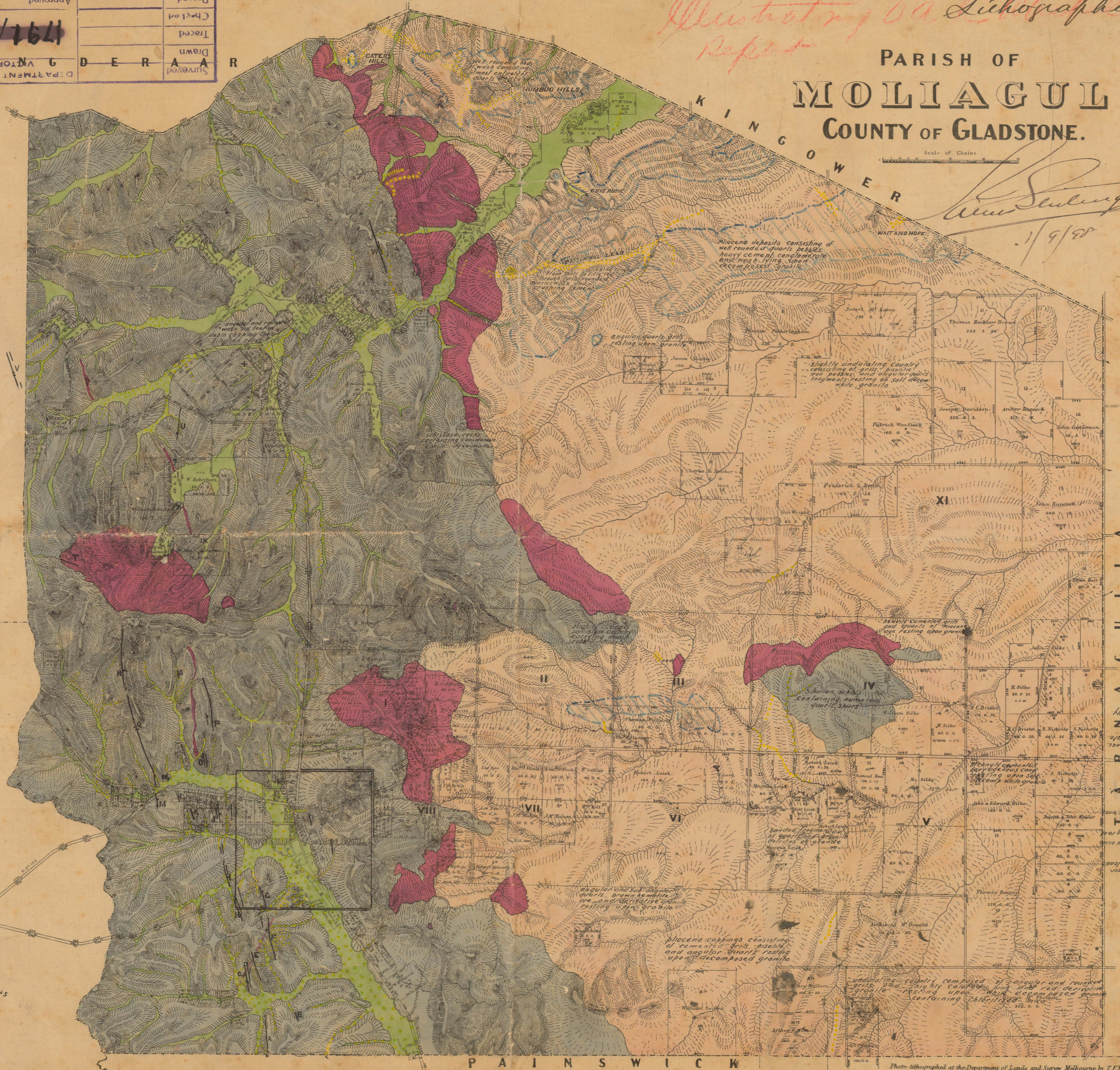


PARISH OF  
**MOLIAGUL**  
COUNTY OF GLADSTONE.

L. 5216

*New Survey*  
1/9/80

Scale of Chains



Approved	Passed
Checked	Traced
Drawn	Drawn
Surveyed	Surveyed

1791/G/1

DEPARTMENT OF MINES  
KING DERARA

1791/G/1  
I  
C  
H  
U  
T  
E  
R  
R

- NOTES.
- A. Moliagul Reef
  - B. Prospected reef
  - C. Welcome Stranger nugget
  - D. Bull-dog reefs
  - E. Stuarts reef
  - F. Queens reef
  - G. Stalls reef
  - H. Waymans reefs
  - I. Snow and Liddels
  - J. Slaty or Blue Slabbing
  - K. Abandoned
  - L. Star of Erin reef
  - M. Deason and Brauer Dogkeys
  - N. Left of the valley reef
  - O. Maori's reefs
  - P. Nuggety reefs
  - Q. Sheoak reef
  - R. Jungs reef
  - S. Robertsons reef
  - T. Molybdenite reef
  - U. Dalmatia reef
  - V. O'Briens reef
  - W. Mc Evoy's or Matrix reefs

LEADS

<b>PLIOCENE</b> (older) consisting of well rounded quartz pebbles, cement, conglomerate, etc.	<b>ALLUVIAL</b> Soils, grits, clays, gravels and wash	<b>TERTIARY</b> Younger Pliocene, consisting of grits, angular conglomerate and washes, clays, quartzite pebbles, decomposed granite resting upon decomposed granite	<b>GRANITE</b> consisting of quartz, felspar, mica and hornblende	<b>SILURIAN</b> Slates, sandstones, shales, claystones	<b>DYKES</b> granite, quartz and diorite
--	--	---	--	---	---

SECTION NEAR WELCOME STRANGER NUGGET  
SCALE: HOR. 10 CHAINS VER. 100 FEET = 1 INCH

Price 1/-

Photo-lithographed at the Department of Lands and Survey Melbourne by T.E.M. Gairner (1892)