

GEOLOGICAL SURVEY OF VICTORIA.

N.E.

L O D D O N D I S T R I C T

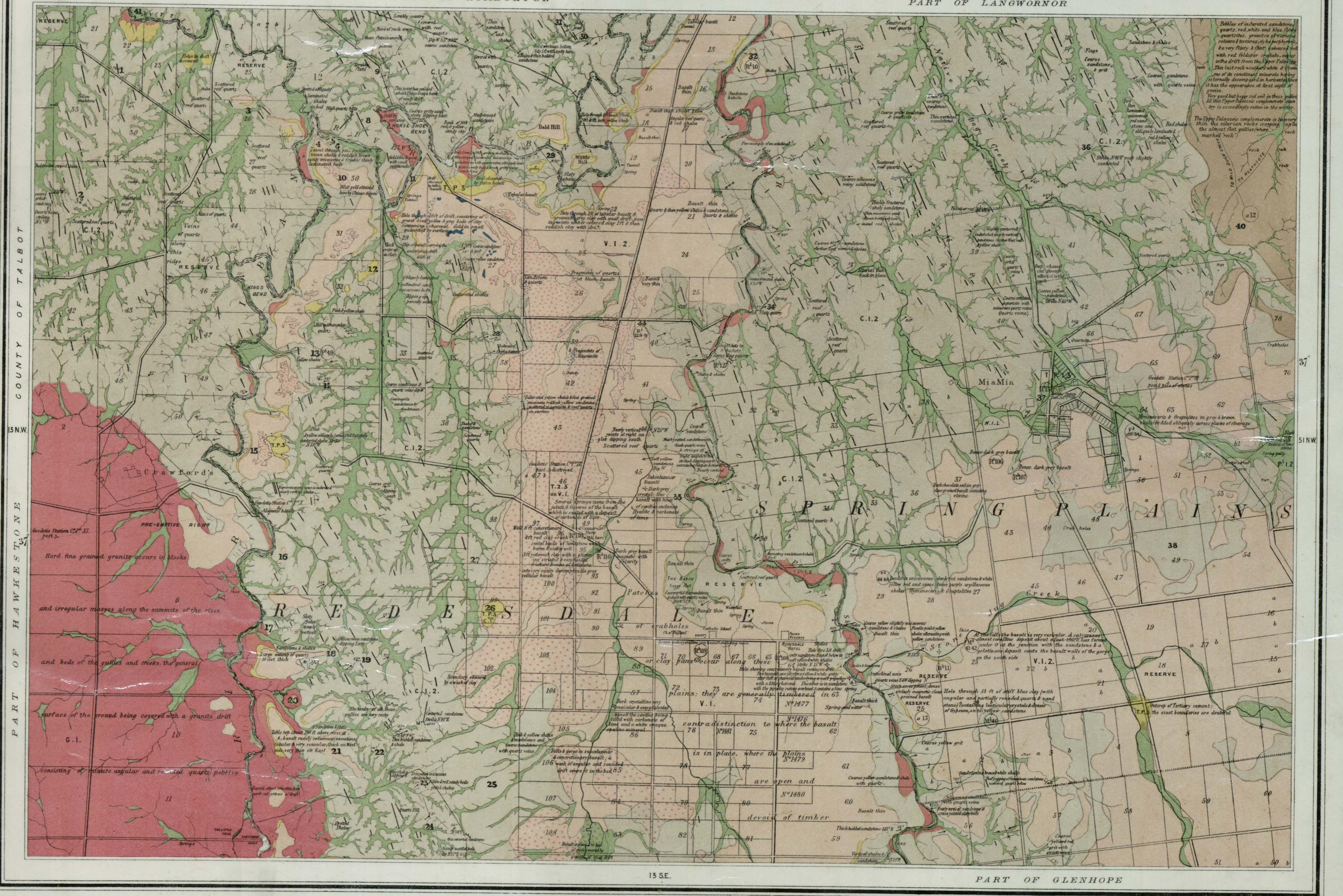
C O U N T Y O F D A L H O U S I E

Nº13

P A R T O F L Y E L L

P A R T O F K I M B O L T O N

P A R T O F L A N G W O R N O R



Surveyed, Engraved and Published under the direction of Alfred R.C. Selwyn, Govt. Geologist at the GEOLOGICAL SURVEY OFFICE MELBOURNE.

Geologically Surveyed by Norman Taylor, Field Geologist & Robert Edgeridge Junr, Assistant Field Geologist, 1882-6. Engraved by De Gruyck & Co. Published 1888.

Legend table with columns for geological periods and features. Includes: Post Miocene, Miocene, Pliocene, Upper Paleozoic or Mesozoic, Lower Silurian, Upper Volcanic, and various rock types like Sand, Clay, Mud, Limestone, Granite, etc.

Scale - Two Inches to a Mile.

Deposits of sand, clay & gravel of the age of the upper field drifts... Horizontal beds, Dip, General Dip of undulating beds, Dip & Strike of Cleavage, Perpendicular beds longest line the Strike, Anticlinal Tilt, Synclinal line, Quartz Veins, Elevation, Locality and mark of Specimen in the Museum, Rock Parish Boundary, County Boundary, Gold Workings thus.