

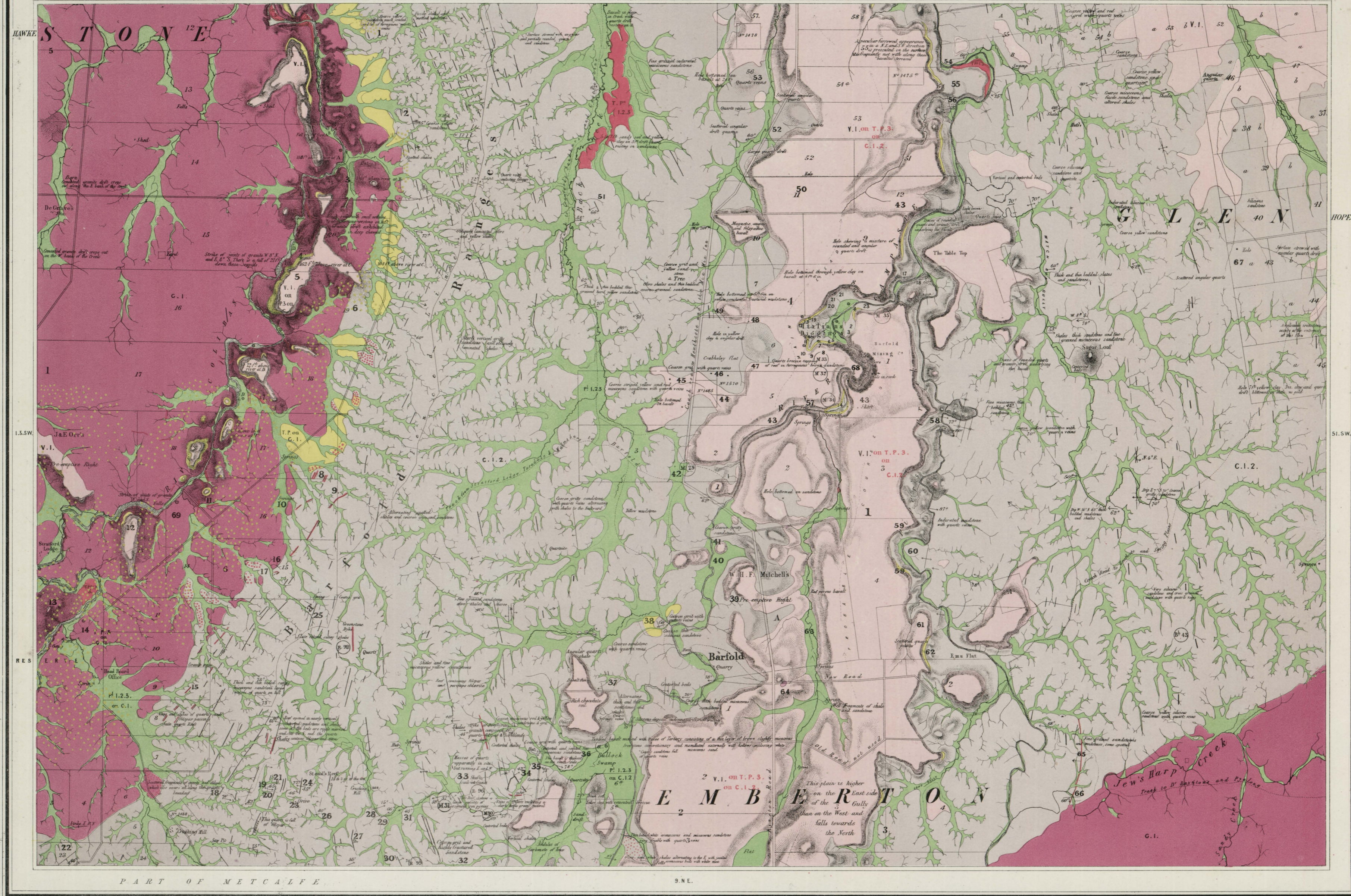
GEOLOGICAL SURVEY OF VICTORIA.

COUNTY OF DALHOUSIE

No. 15.

S.E. COUNTY OF TALBOT

PART OF REDESDALE 13. N.E.



NOTES.

- 1. Large mass of siliceous, indurated, yellow, hackly, fractured sandstone, with patches of quartzite-like limestones.
- 2. Round-topped, stratified mass of quartz, with quartz pebbles embedded on surface, yellow silica on face of joints, and a brown earthy mineral filling prismatic cavities.

NOTES.

- 36. On these hills the basalt is occasionally overlaid by a deposit, from 4 to 8 feet thick, of very soft, yellow, gray, and brown clay. Where these patches occur the surface is generally occupied by "grass-balls" or "clay-pans", and timbered with large gums.
- 37. At these falls, the upper flow of hard dense basalt (trace most horizontally by line of cavities) is distinctly shown resting on a soft red decomposed siliceous basalt. This is believed to be the result of a "grass-ball" or "clay-pans" deposit.

EXTRA NOTES NOT NUMBERED. Note: The rounded quartz-drift along the Colliery is a deposit of quartzite pebbles, and is not a deposit of quartzite pebbles, but a deposit of quartzite pebbles.

NOTES REFERRING TO ITALIAN'S DIGGINGS.

- 1. Columnar basalt.
- 2. Coarse gritty sandstone, with quartz veins.
- 3. Shales, westerly dip.
- 4. Shales nearly vertical.

Printed at the Geological Department, Government Office, Melbourne, by J. Jones.

Surveyed, Engineered and Published under the direction of Alfred R. C. Selwyn, Geologist at the GEOLOGICAL SURVEY OFFICE MELBOURNE.

Geologically & Topographically Surveyed by Norman Taylor, Field Geologist, 1867. Lithographed by Beck & Shepherd, Publishers, 1868.

Legend and Scale. Legend includes: Post Pliocene, Recent Pliocene, Marine & Freshwater, Older Pliocene, Lower Silurian, Upper Volcanic, Granite, and various geological symbols like 'Thin capping on older rocks'. Scale: Two inches to a Mile. Symbols for faults, anticlines, and synclines are also included.

Figures referring to marginal notes thus 32.