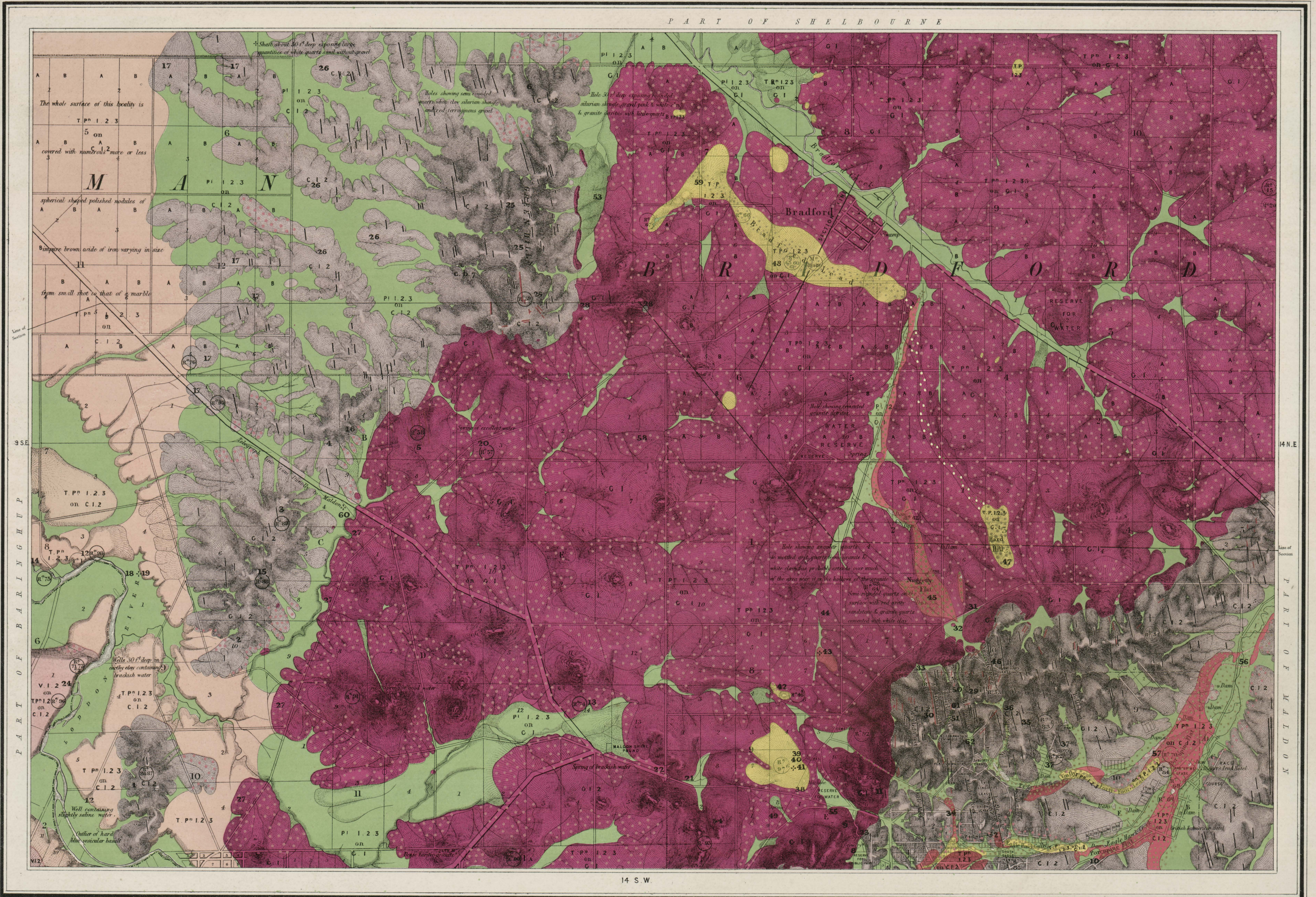


Nº 14

L O D D O N D I S T R I C T

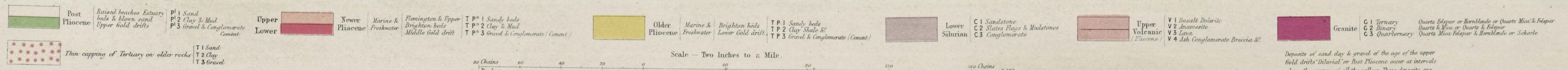
N.W



Printed at the Geological Department
Govt Printing Office, Melbourne, by J. Fennie

Surveyed, Engraved and Published under the direction of Alfred R.C. Selwyn, Geologist at the GEOLOGICAL SURVEY OFFICE MELBOURNE.

Geologically & Topographically Surveyed by Geo. Ulrich & Henry Brown, Field Geologists 1866-7
Outline & Writing engraved by J. Ross, Hills lithographed by Rich^d. Shepherd. Published 1868.



Eiven Dykes Gold Quartz Vein Locality and mark of Specimen in the Museum Rock Fossil Mineral District Boundary County Boundary Gold Workings trace

Figures referring to marginal notes, thus 4. Locality referred to by notes thus *

Deposits of sand clay & gravel of the age of the upper field drifts Diluvial or Post Pliocene occur at intervals along the course of all the valleys. These deposits are frequently cut through & redistributed by existing river action during floods forming alluvial A. 1. 2. 3. Recent Gold drifts.