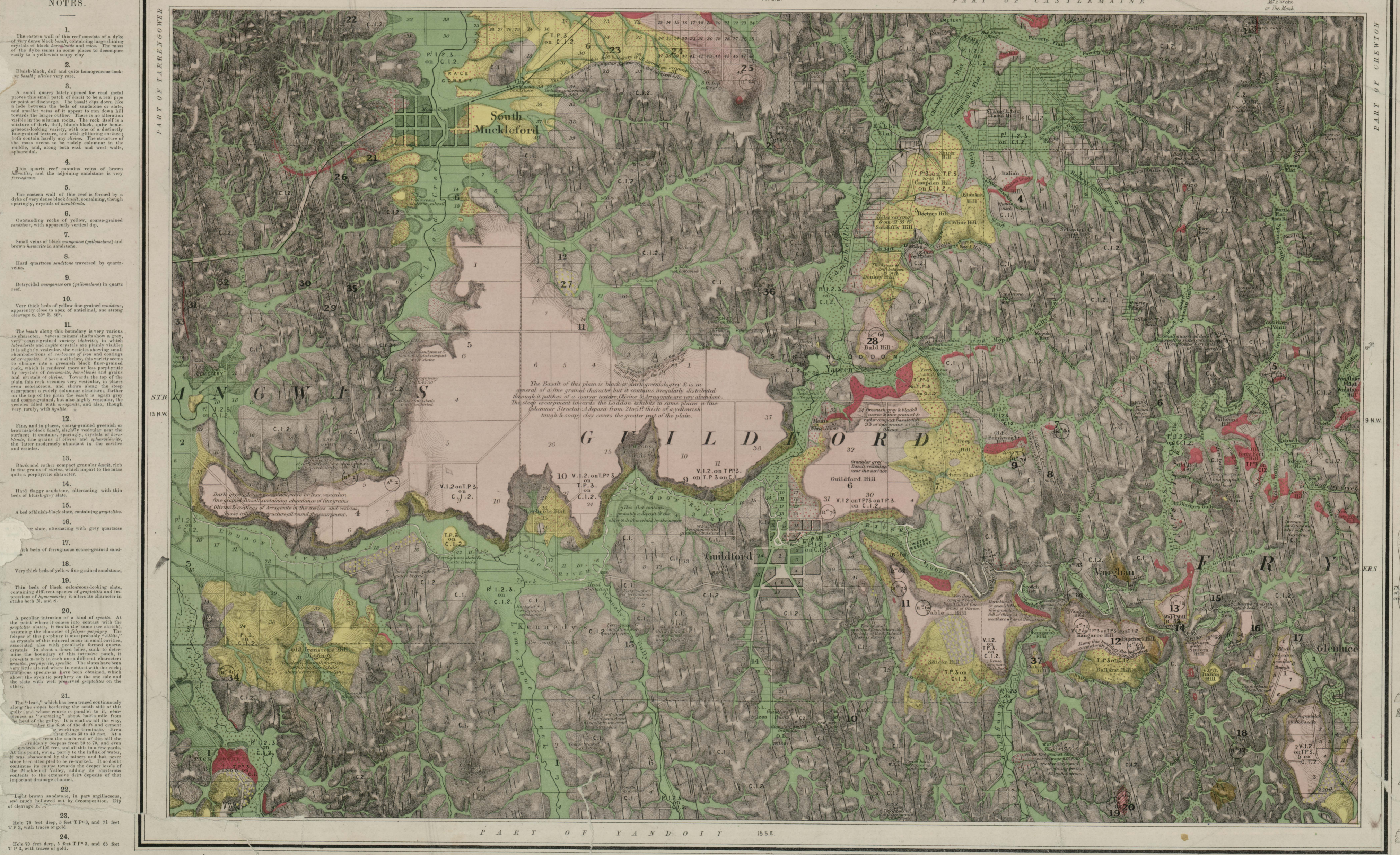


Crown Copyright. Permission required for use in other works. Digital Version is Licenced

Crown Copyright. Permission required for use in other works. Digital Version is Licenced

NOTES. 1. The eastern wall of this reef consists of a dyke of very dense black basalt, containing large shining crystals of black hornblende and mica. The mass of the dyke seems in some places to decompose easily to a yellowish sandy clay.

NOTES. 25. Several small quarries, opened at the eastern foot of the mountain show a bluish-black, very dense and compact, quite homogeneous-looking basalt, mixed with one or two very fine-grained and very vesicular varieties. Towards the top of the mountain the basalt becomes more compact, and the top part consists, so to say, of an irregularly jointed massive trunk of basalt, similar to that in the quarries referred to, and showing a similar structure at its southern extremity. A granite is abundant in the crevices of the rock, and through the mass are distributed, though very sparingly, small plates of mica. Olivine is very scarce. The siliceous rocks round the base of the hill show a peculiar perforated (reticulated) appearance.

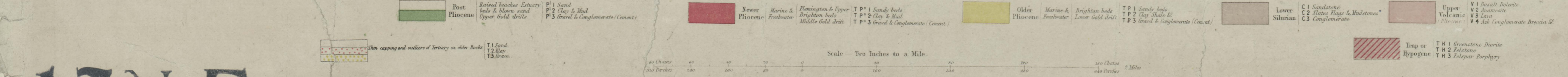


Outline & Writing, Engraved by Brown & Slight. Printed at the Geological Department, Government Office, Melbourne by L. Pirrie

GEOLOGICAL SURVEY DEPARTMENT OF MINES VICTORIA

Surveyed, Engraved, and Published under the direction of Alfred H. C. Selwyn, Geologist at the GEOLOGICAL SURVEY OFFICE MELBOURNE.

Geologically Surveyed by C. D. R. Alpin & Co. Ulrich, Esq., Esq. Geologists. Partly surveyed by The Geologist & A. Walker, Assistant Surveyor. Hills topographically surveyed & drawn by Geo. Ulrich, Esq. Lithographed by Rick & Shepherd. Published 1864.



Scale - Two Inches to a Mile.

GEOLOGICAL SURVEY DEPARTMENT OF MINES VICTORIA

Crown Copyright. Permission required for use in other works. Digital Version is Licenced

Crown Copyright. Permission required for use in other works. Digital Version is Licenced