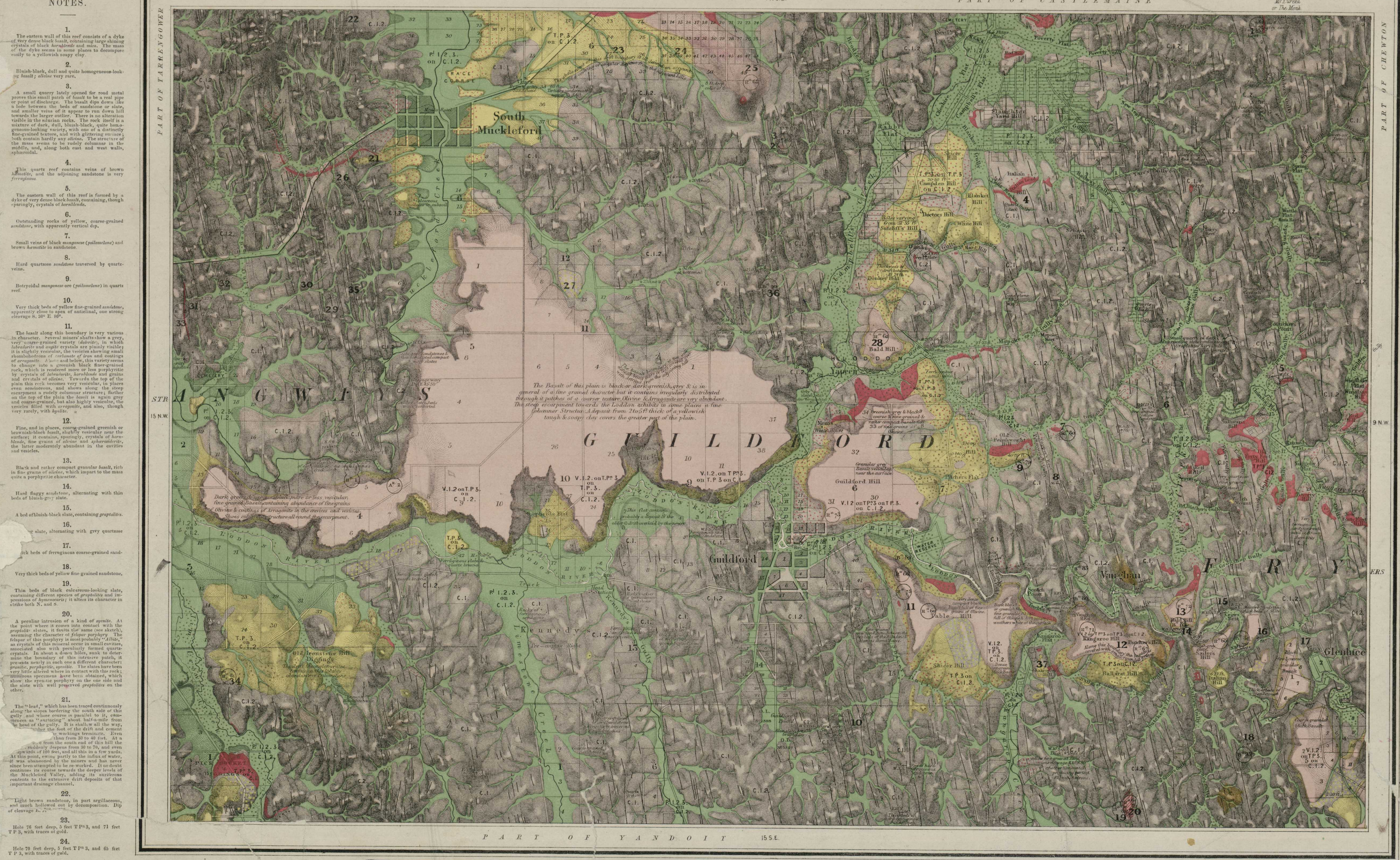


Crown Copyright. Permission required for use in other works. Digital Version is Licenced

Crown Copyright. Permission required for use in other works. Digital Version is Licenced

NOTES. 1. The eastern wall of this reef consists of a dyke of very dense black basalt, containing large shining crystals of black hornblende and mica. The mass of the dyke seems in some places to decompose easily to a yellowish sandy clay.

NOTES. 25. Several small quarries, opened at the eastern foot of the mountain show a bluish-black, very dense and compact, quite homogeneous-looking basalt, mixed with one or two very fine-grained and highly vesicular textures, but only very little of these. The structure of the rock is columnar with tabular jointing (horizontal cleavage). Towards the top of the mountain the basalt becomes more compact, and the top joint (horizontal cleavage), so to say, of an irregularly jointed massive trunk of basalt, similar to that in the quarries referred to, and showing a finely columnar structure at its southern base. Although very sparingly, small plates of mica, olivine is very scarce. The siliceous rocks round the base of the hill show a peculiar perforated (reticular) appearance.

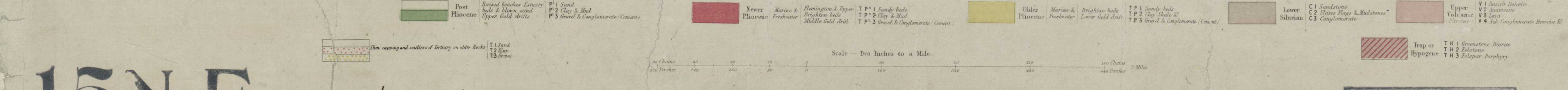


Outline & Writing, Engraved by Brown & Sligte. Printed at the Geological Department, Government Printing Office, Melbourne by L. Rennie

GEOLOGICAL SURVEY DEPARTMENT OF MINES VICTORIA

Surveyed, Engraved and Published under the direction of Alfred R. C. Selwyn, Chief Geologist at the GEOLOGICAL SURVEY OFFICE MELBOURNE.

Geologically Surveyed by C.D. R. Alpin & G. Ulrich, both Geologists. Partly surveyed by The Commonwealth & A Walker, Assistant Surveyors. Hills topographically surveyed & drawn by G. Ulrich, Diagrapher by Rick & Shepherd. Published 1866.



Scale - Two Inches to a Mile.

GEOLOGICAL SURVEY DEPARTMENT OF MINES VICTORIA

Crown Copyright. Permission required for use in other works. Digital Version is Licenced



Quarter sheet 15NE Guildford (Aplin & Ulrich, 1864)

This map of the area around Guildford (between Castlemaine and Daylesford) includes notes and sketches in the margins as well as on the map itself.

Features of interest include the South Muckleford racecourse (top left), Pickpocket diggings (bottom left), and the high basalt terraces, remnants of lava that flowed from a volcano about 3 million years ago.

Note that hills are depicted by feathery, radiating lines rather than the contours commonly used on maps today.