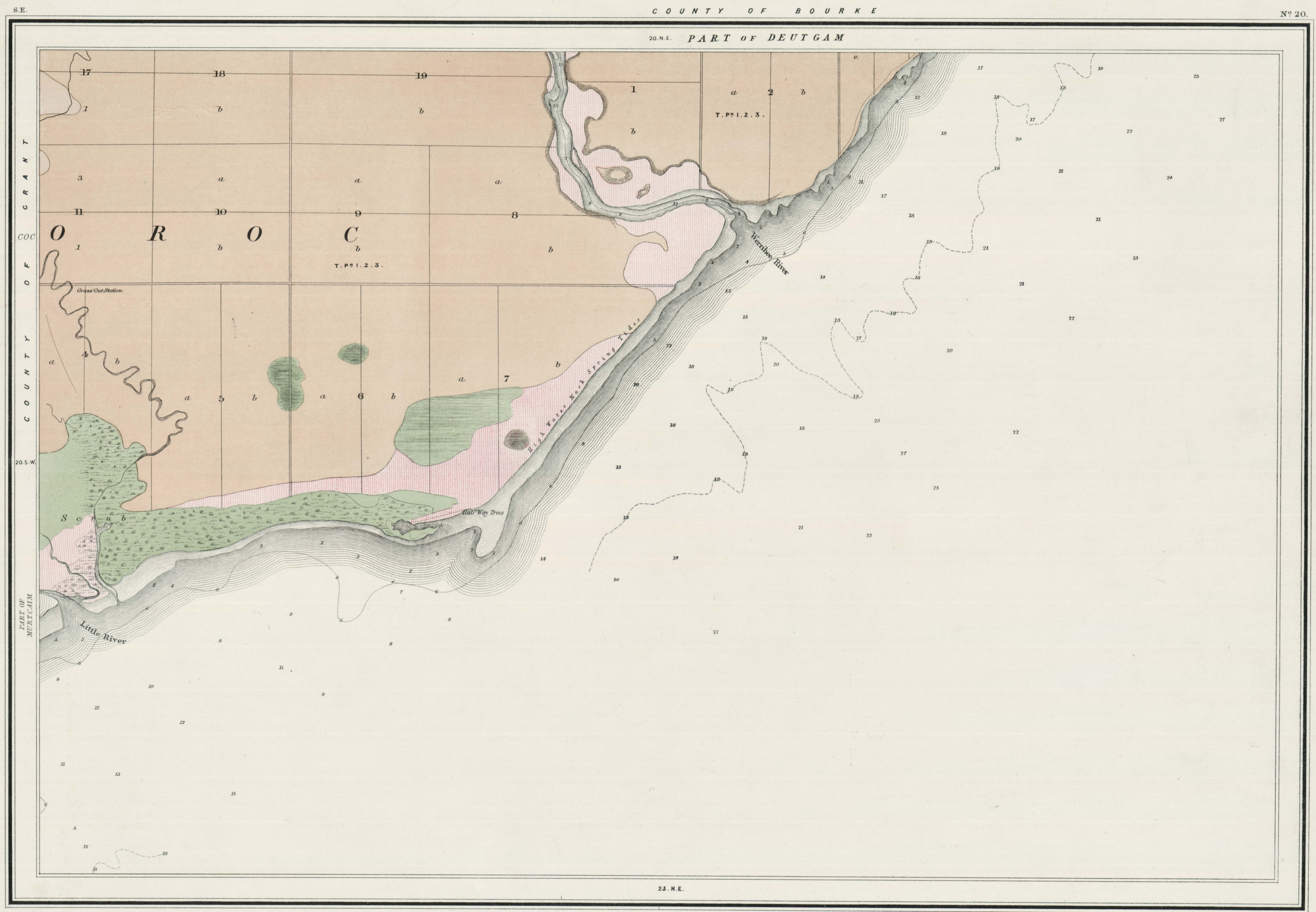


GEOLOGICAL SURVEY OF VICTORIA.

COUNTY OF BOURKE

No 20.

20. N.E. PART OF DEUTGAM



GEOLOGICAL SURVEY DEPARTMENT OF MINES VICTORIA

GEOLOGICAL SURV Y DEPARTMENT OF M...NES VICTORIA

20S.E

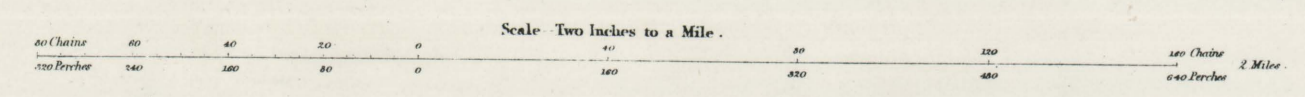
20S.E

Printed at the Mining and Geological Department, Govt Printing Office Melbourne by J. Finlay & J.M. Ferguson.

Surveyed, Engrossed and Published under the direction of Alfred R. C. Selwyn, Geol.ologist at the GEOLOGICAL SURVEY OFFICE MELBOURNE.

Note: The Outline Compiled by J. Wilkinson, from Originals in the Surveyor General's Department.

<p>Alluvial</p> <p>Recent Alluvial & swamp deposits on older rocks</p> <p>A 1 Sand A 2 Clay & Mud A 3 Gravel Recent gold drift</p>	<p>Post Pliocene</p> <p>Rational beaches Estuary beds & bays, sand Upper gold drifts</p>	<p>P 1 Sand P 2 Clay & Mud P 3 Gravel & Conglomerate (Cement)</p>	<p>Overlying Tertiary</p>	<p>Newer Pliocene</p> <p>Mariane & Freuchen's</p>	<p>Flemington & Upper Brighton beds Middle gold drift</p>	<p>T P 1 Sandy beds T P 2 Clay & Mud T P 3 Gravel & Conglomerate (Cement)</p>	<p>Upper Volcanic</p>	<p>V 1 Basalt Dolerite</p>
								<p>V 2 Trachyte</p> <p>V 3 Lava</p> <p>V 4 Ash Conglomerate Breccia &c</p>



Geologically Surveyed by C.D. H. Apfen, Field Geologist, 1861. Outline & Writing, Engrossed by Brown & Sligh, Hill's Lithographers by Rick's, Shepherds. Published 1863.

Deposits of sand clay & gravel of the age of the upper gold drifts "discovered" in this Province occur at intervals along the course of all the valleys. These deposits are frequently cut through & redistributed by existing river action during floods forming alluvial A. 1, 2, 3. Recent Gold drifts.