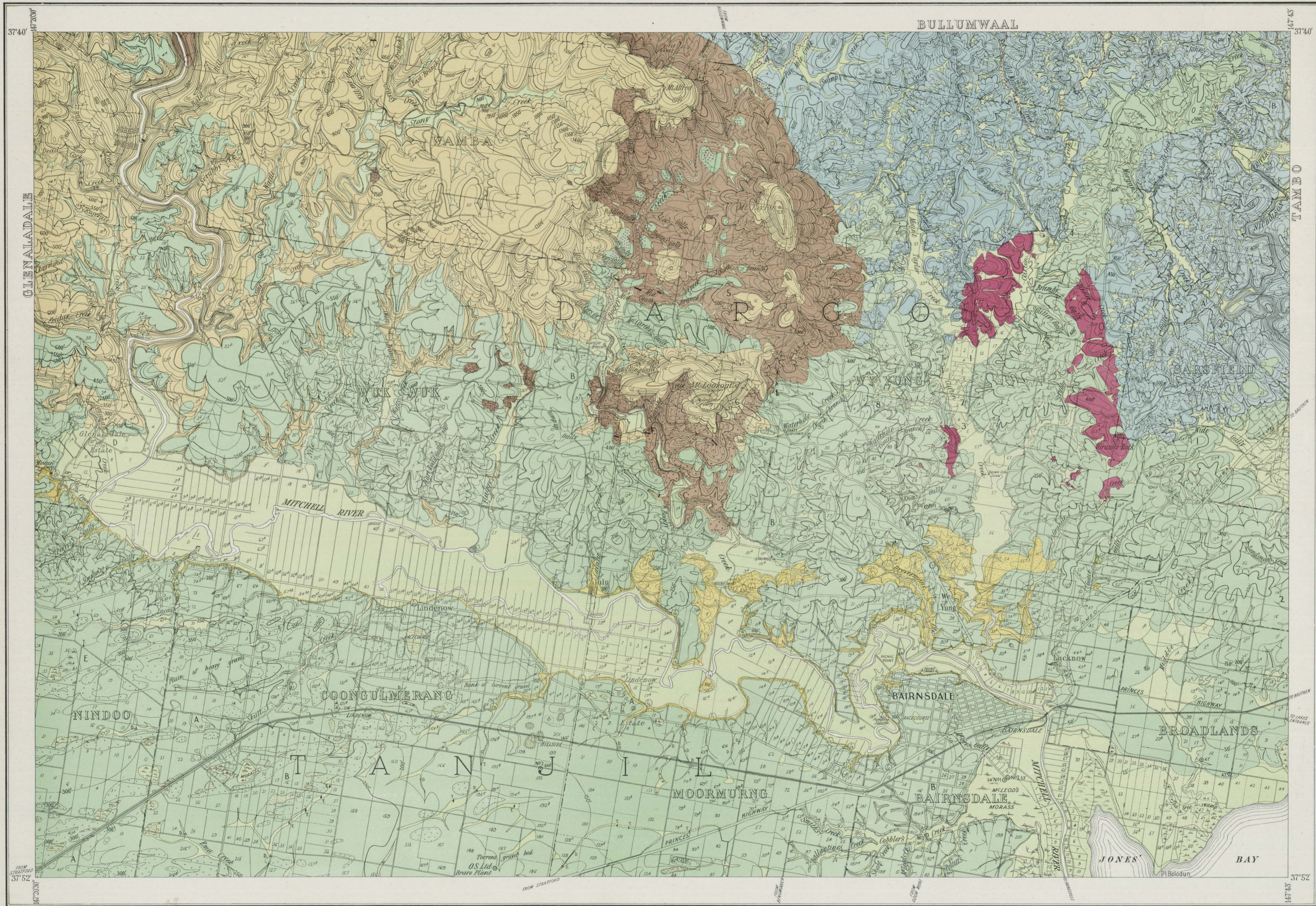
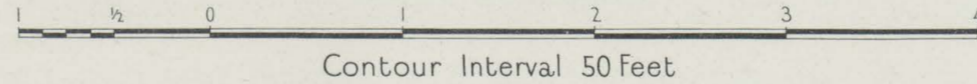


# BAIRNSDALE DISTRICT GEOLOGICAL AND TOPOGRAPHICAL MAP



Scale of Miles



*Geologically & Topographically surveyed by J.G. Easton, Field Geologist, assisted by A.F. Chambers & N.M. Windsor, 1935. Published 1942*

- RECENT AND ALLUVIAL**
  - Swamp, lake and river deposits.
  - Slightly raised terraces on older formations.
- PLEISTOCENE**
  - Clay, gravel and sand beds, clay plains and terrace gravel deposits.
  - Sand hills.
- PLIOCENE**
  - Fossiliferous marl, calcareous sandstone, highly fossiliferous ferruginous sandstone, etc.
- MIOCENE**
  - Limestone, marl and polyzoal beds with abundant *Sponylus*, *Asperaster*, *Ostrea*, etc.

- DEVONIAN**
  - UPPER**
    - Conglomerates, basal breccia beds, siliceous sandstones, purple, grey & mottled mudstones and shales with plant remains.
    - Coarse grained porphyry with large crystals of white and pink felspar in a grey to pink colored, ground mass.
  - LOWER**
    - Medium grained porphyry.
- ORDOVICIAN**
  - UPPER**
    - Fine to medium grained, grey colored granite.
    - Dark colored slates and sandstones with occasional grit beds.

INDEX TO ADJOINING SHEETS

35 C.	35 D.	36 C.
23 A.	23 B.	24 A.
23 C.	23 D.	24 C.



- |   |  |  |
|---|--|--|
| <ul style="list-style-type: none"> <li> Anticline</li> <li> Syncline</li> <li> Horizontal bedding</li> <li> Dip and strike</li> <li> Dykes, Granite</li> <li> Lamprophyre</li> <li> Porphyry</li> <li> Ironstone deposit</li> </ul> | <ul style="list-style-type: none"> <li> Swamp</li> <li> Seasonal lake</li> <li> Sink hole</li> <li> Gravel pit</li> <li> Dam</li> <li> Tank</li> <li> Bore (with depth)</li> <li> Waterfall</li> </ul> | <ul style="list-style-type: none"> <li> Quartz Reef</li> <li> " " (Auriferous)</li> <li> Alluvial gold</li> <li> Fossil localities</li> <li> Rock specimens</li> <li> Trig station</li> <li> Contours</li> </ul> |
|---|--|--|

