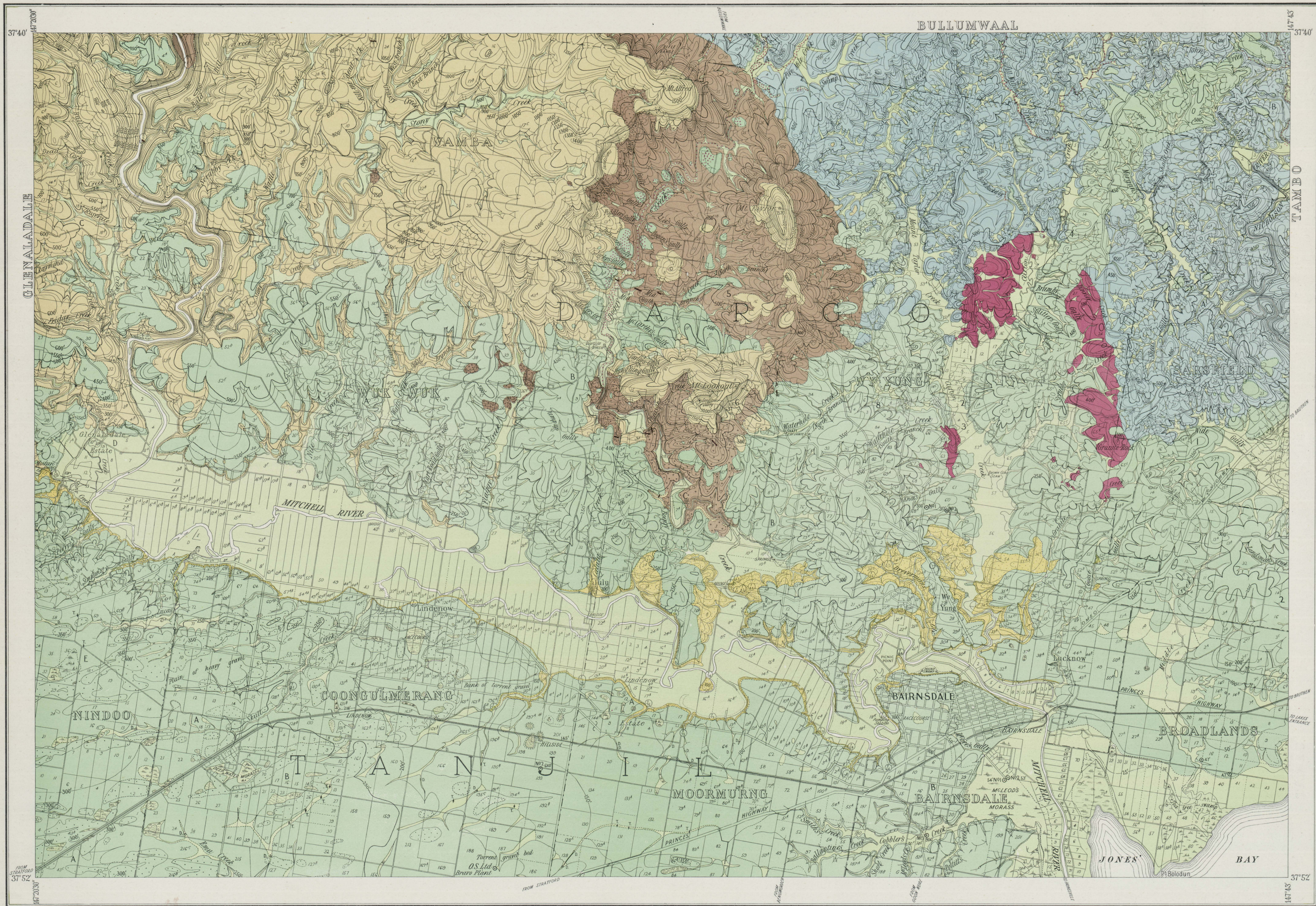


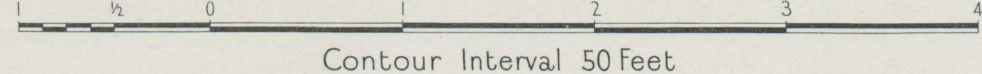
BAIRNSDALE DISTRICT GEOLOGICAL AND TOPOGRAPHICAL MAP

Nº23 B

New Series



Scale of Miles



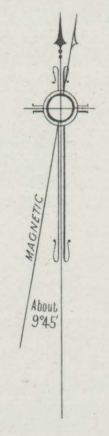
Contour Interval 50 Feet

Geologically & Topographically surveyed by J.G. Easton, Field Geologist, assisted by A.F. Chambers & N.M. Windsor, 1935. Published 1942

	RECENT AND ALLUVIAL	Swamp, lake and river deposits. Slightly raised terraces on older formations.
	PLEISTOCENE	Clay, gravel and sand beds, clay plains and terrace gravel deposits. Sand hills.
	PLIOCENE MIOCENE	Possibly marl, calcareous sandstone, highly fossiliferous ferruginous sandstone, etc. Limestone, marl and polygonal beds with abundant <i>Spondylus</i> , <i>Myopaster</i> , <i>Ostrea</i> , etc.

DEVONIAN	UPPER	Conglomerates, basalt breccia beds, siliceous sandstones, purple, grey & mottled mudstones and shales with plant remains.
	LOWER	Coarse grained porphyry with large crystals of white and pink feldspar in a grey to pink colored, ground mass. Medium grained porphyry.
ORDOVICIAN	UPPER	Fine to medium grained, grey colored granite. Drab colored slates and sandstones with occasional grit beds.

INDEX TO ADJOINING SHEETS		
35 C.	35 D.	36 C.
23 A.	23 B.	24 A.
23 C.	23 D.	24 C.



Anticline	X	Swamp		Quartz Reef	
Syncline	X	Seasonal lake		" " (Auriferous)	
Horizontal bedding	+	Sink hole		Alluvial gold	
Dip and strike	+	Gravel pit		Rossil localities	
Dykes, Granite		Dam		Rock specimens	
Lamprophyre		Trunk		Trig station	
Porphyry		Bore (with depth)		Contours	
Tronstone deposit		Waterfall			

