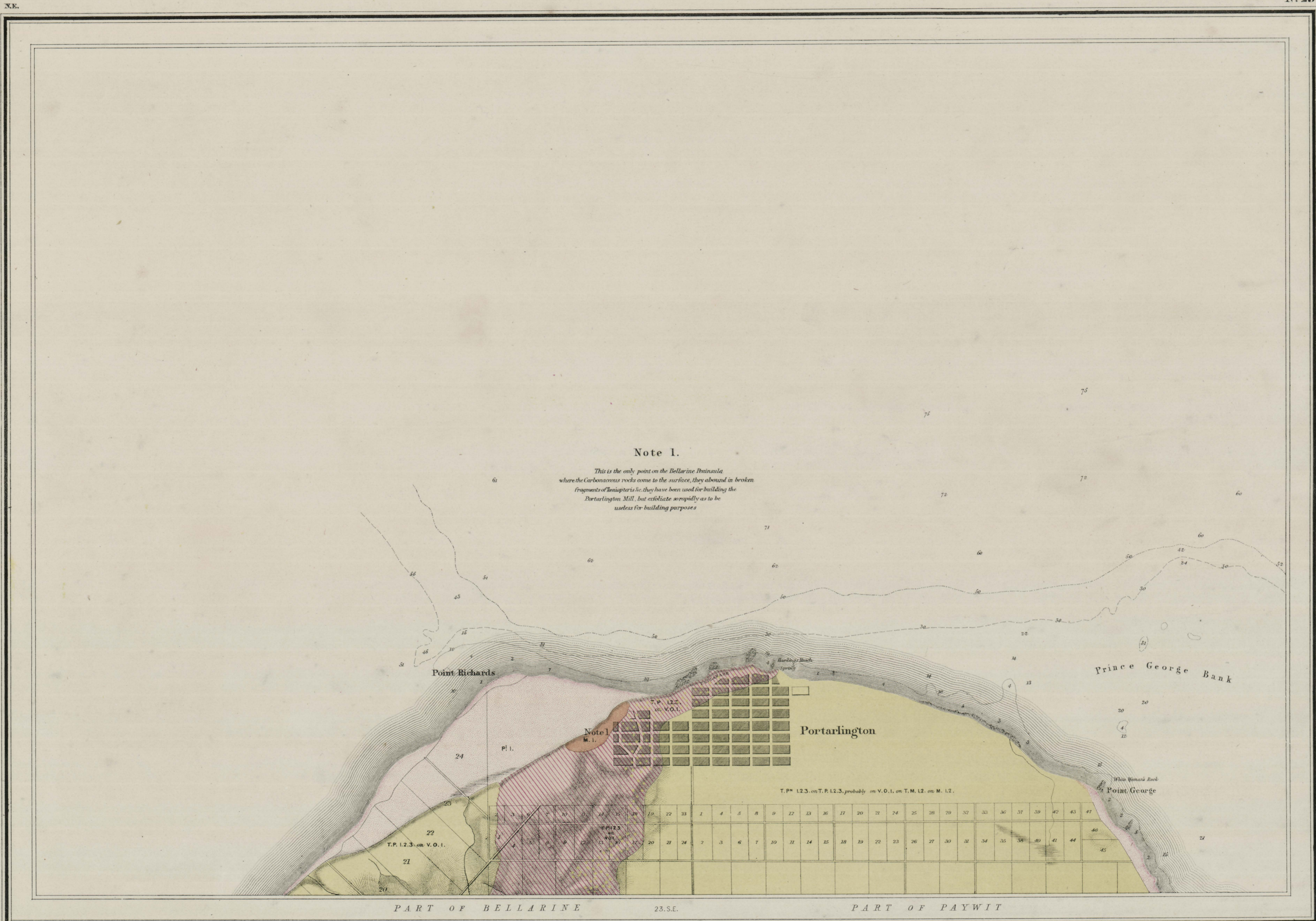


GEOLOGICAL SURVEY OF VICTORIA.

No 25

23N.E

GEOLOGICAL SURVEY
DEPARTMENT OF MINES
VICTORIA



Note 1.

This is the only point on the Bellarine Peninsula where the Carbonaceous rocks come to the surface, they abound in broken fragments of *Trinitites* &c. they have been used for building the Portarlington Mill, but abradate so rapidly as to be useless for building purposes.

GEOLOGICAL SURVEY
DEPARTMENT OF MINES
VICTORIA

Printed at the Mining and Geological Department,
Govt Printing Office, Melbourne, by J. Egan & J. M. Ferguson.

Surveyed, Engraved and Published under the direction of Alfred R. C. Selwyn, Govt Geologist at the GEOLOGICAL SURVEY OFFICE MELBOURNE.

Geologically Surveyed by Richd. Danares, Field Geologist 1861.
Outline & Writing Engraved by Brown & Slight, Mills, Lithographed by Richd. Shephers.
Published 1863.

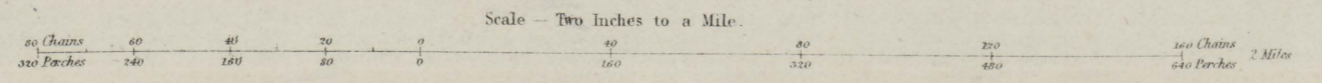
Note: The Outline Compiled by J. Wilkinson, from Originals in the Surveyor General's Department.

Crown Copyright,
Permission required
for use in other works.
Digital Version is Licensed.

Post Pliocene	Raised beaches Estuary beds & bluffs and Upper Gold drifts	P1 Sand P2 Clay & Mud P3 Gravel & Conglomerate (Coastal)	Overlying Basalts	Newer Pliocene	Marine & Freshwater	Hemington & Upper Brighton beds Middle Gold drift	T P ^m 1 Sand beds T P ^m 2 Clay & Mud T P ^m 3 Gravel & Conglomerate (Coastal)	Older Pliocene	Marine & Freshwater	Brighton beds Lower Gold drift	T P 1 Sand beds T P 2 Clay Shale &c. T P 3 Gravel & Conglomerate (Coastal)	Carbonaceous (Massive)	M. 1 Sandstone M. 2 Shales & Mudstones M. 3 Conglomerate	Older Miocene & Older	V O 1 Basaltic Debris V O 2 Sandstone V O 3 Lava V O 4 Lsh. Conglomerate Breccia &c.
------------------	--	--	----------------------	-------------------	------------------------	---	---	-------------------	------------------------	-----------------------------------	--	---------------------------	--	-----------------------------	---

23N.E

T 1 Sand
T 2 Clay
T 3 Gravel



Locality and mark of Specimen in the Museum (M¹⁰)

Crown Copyright,
Permission required
for use in other works.
Digital Version is Licensed.