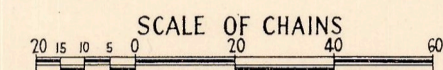


SOIL MAP

PARTS OF PARISHES OF NUNTIN, BUNDALAGUAH COUNTY OF TANJIL

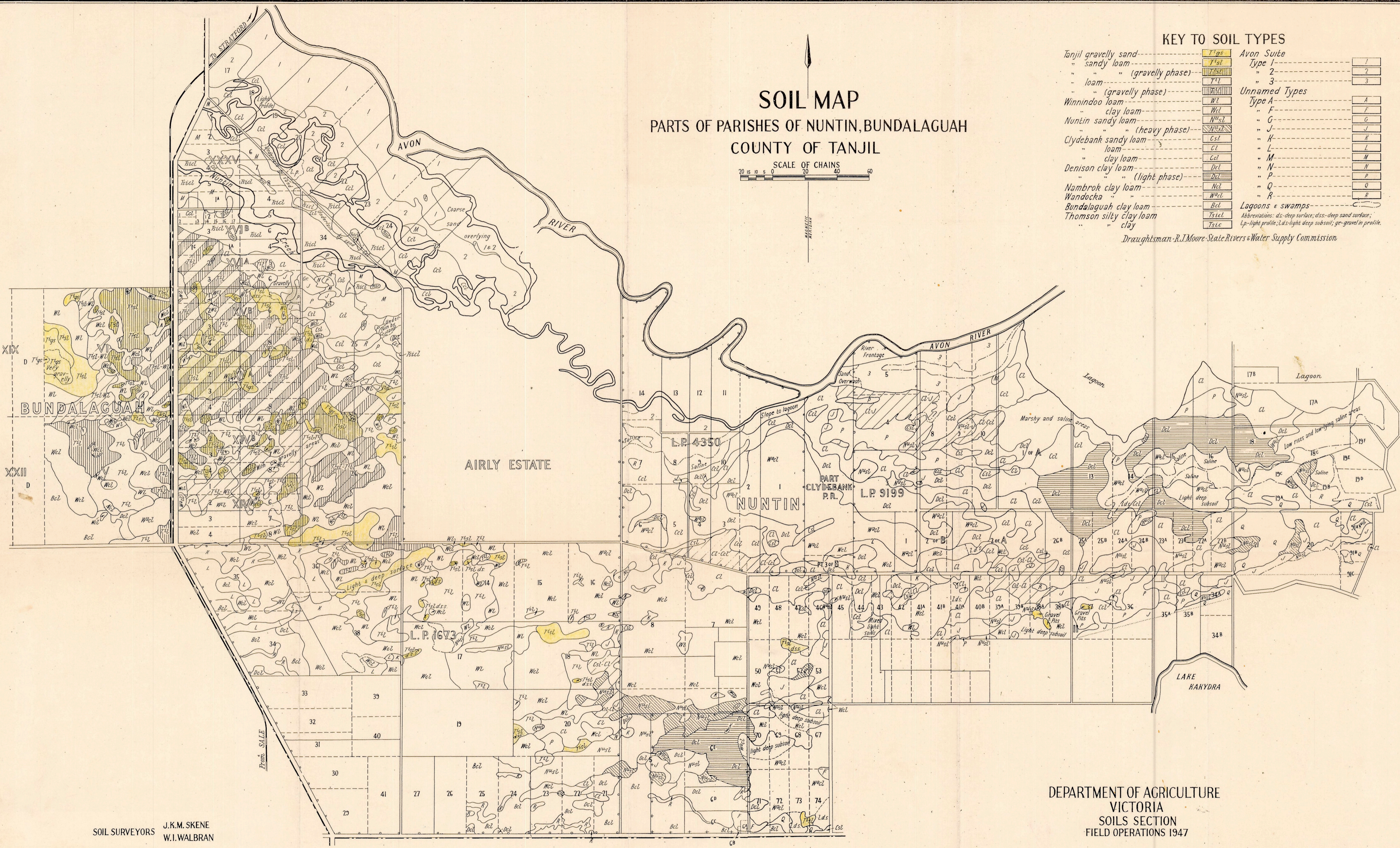


KEY TO SOIL TYPES

Tanjil gravelly sand	T ^{gs}	Avon Suite	
" sandy loam	T ^{sl}	Type 1	1
" " (gravelly phase)	T ^{gs}	" 2	2
" loam	T ^l	" 3	3
" " (gravelly phase)	T ^{gs}	Unnamed Types	
Winnindoo loam	W ^l	Type A	A
" clay loam	W ^{cl}	" F	F
Nuntin sandy loam	N ^{sl}	" G	G
" " (heavy phase)	N ^{sl}	" J	J
Clydebank sandy loam	C ^{sl}	" K	K
" loam	C ^l	" L	L
" clay loam	C ^{cl}	" M	M
Denison clay loam	D ^{cl}	" N	N
" " (light phase)	D ^{cl}	" P	P
Nambrok clay loam	N ^{cl}	" Q	Q
Wandocka	W ^{cl}	" R	R
Bundalaguah clay loam	B ^{cl}	Lagoons & swamps	
Thomson silty clay loam	T ^{slc}		
" clay	T ^{cl}		

Abbreviations: ds-deep surface; dss-deep sand surface; lp-light profile; lds-light deep subsoil; gr-gravel in profile.

Draughtsman-R.J. Moore State Rivers & Water Supply Commission



SOIL SURVEYORS
J.K.M. SKENE
W.I. WALBRAN

DEPARTMENT OF AGRICULTURE
VICTORIA
SOILS SECTION
FIELD OPERATIONS 1947